

Tableau de Pâques – Chasse aux œufs dans un jardin

On peut pointer par exemple : « Où est l'œuf ? » « Wouah ! Tu as trouvé la poule ! Super ! » « Oh oh... je vois un lapin... là-bas, près de l'arbre... » « Qu'est-ce que je vois près des fleurs ?... » « Tu cherches encore ? ». « Je mets l'œuf dans le sac... »

Vous pouvez reproduire le tableau avec des pictogrammes plus adaptés à la situation (par exemple dans le cas d'une chasse aux œufs dans la maison).










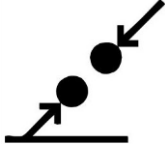
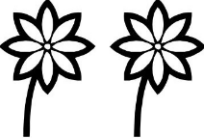









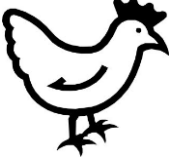
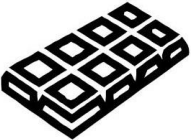

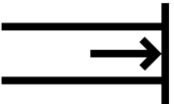
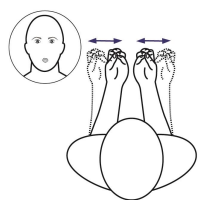
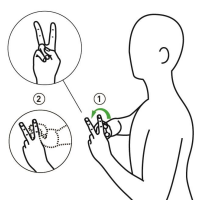
 quoi ?	 chercher	 mettre	 là-bas	 arbre	 oui
 où ?	 voir	 sac, panier	 près de	 fleurs	 non
 je	 prendre	 œuf	 cloche	 whoua ! Génial !	 encore
 tu	 manger	 poule	 chocolat	 super !	 fini

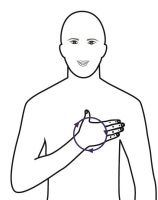
Tableau de Pâques Chasse aux oeufs dans un jardin Quelques phrases à signer



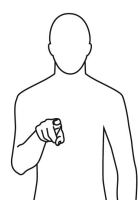
Où



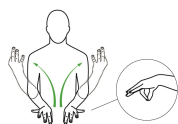
est l'oeuf ?



Génial !

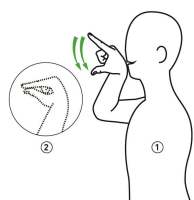


Tu

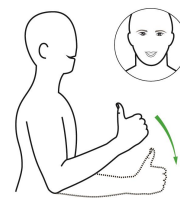


as trouvé

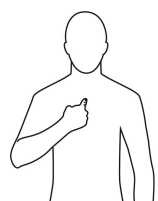
la



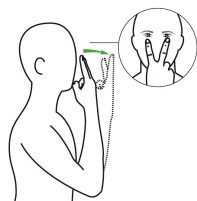
poule



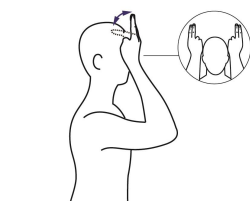
Super !



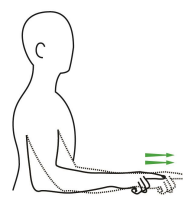
Je



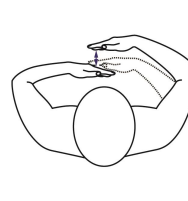
vois



un lapin



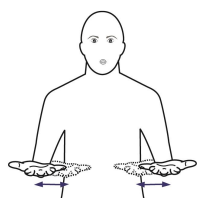
là-bas



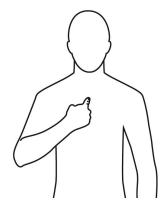
près de



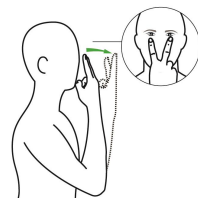
l'arbre



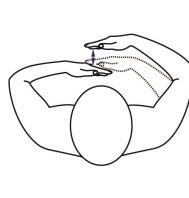
Qu'est-ce que



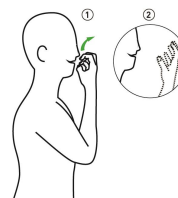
je



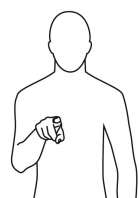
vois



près des



fleurs ?



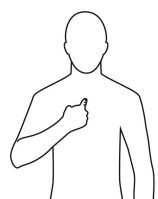
Tu



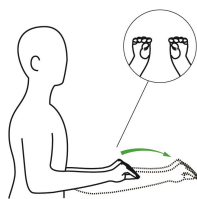
cherches



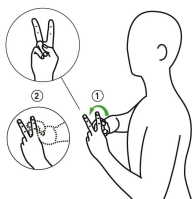
encore ?



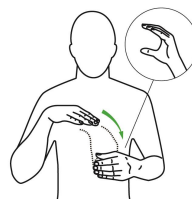
Je



mets

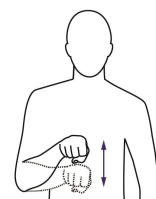


l'oeuf



dans

le



sac